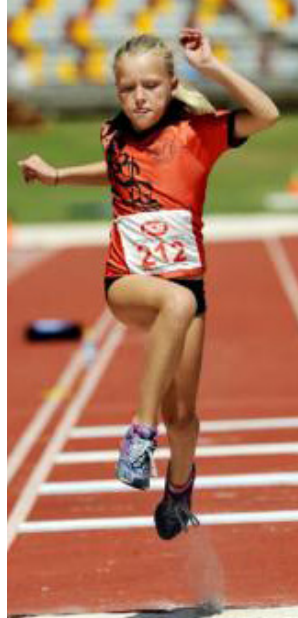
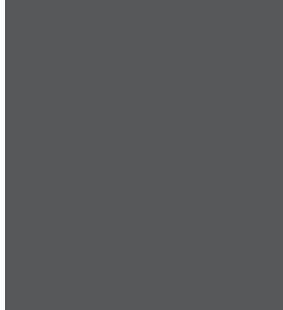


Open space and land use planning



Our approach

Many of our clients realise the benefits in seeking external advice in terms of land use planning, especially in relation to sport, recreation, parks and open space matters. Land use planning projects are often driven by state or territory legislation and associated policy, regulations and guidelines. It is noted that the guidelines can change and our team is dedicated to keeping up-to-date with amendments so that we can offer our clients a range of land use planning options, especially in terms of processes employed to best reflect the local context and desires.

Our team has experience in the development of open space plans, land management plans, planning scheme codes, land use zoning, infrastructure plans, strategic land use planning, structure and master planning.

The challenge for many local governments is to establish a framework for open space provision that is easy to understand, transparent in determining needs and can be applied consistently across different sections of Council—eliminating confusion, mixed messages or contradictory advice in land planning processes. Further, it is essential that open space planning (and ultimately open space design and development) reflects the needs and desires of the community. ROSS Planning understands the legislative options available to councils to strengthen their open space planning processes to ensure quality outcomes.

Quality open space forms a significant part of an urban area's lifestyle infrastructure. A 'green' environment encourages pride in the community and provides a location for recreation and sporting activity and ultimately offers areas for improved physical and social health for residents and visitors alike. It defines an area as an inviting place to live or visit.

Case studies

Queensland Government — Land for Public Parks Evidence-based Research

The Department was looking for evidence to better inform planning for public sport and recreation parks, ensuring sufficient land is protected for these purposes in the future. Evidence was gathered through extensive consultation (distributing a survey to every Queensland council, conducting a roadshow of workshops across the State and widespread interviews), academic and industry reviews (including reviewing every local government park planning policy) and GIS-based analysis and assessment. Ultimately, the report provided data to guide policy development and to assist the Department in defining its role in influencing local government land-use planning practices for parks.

Lithgow City Council — Open Space and Recreational Needs Study

This open space plan was driven by the need to understand the costs of the open space resource, meeting the needs of a changing population and ensuring quality planning practices. Analysis included the inspection of every Council-managed park, sports facility and additional open space parcel.

The Study is an accountable and transparent forward planning document. It provides clear, realistic and achievable recommendations that feed directly into the new Local Environmental Plan and Development Control Plan. It is important that the Study can be readily reviewed by Council in the future and, therefore, we developed a robust and easy-to-follow framework.

Mount Isa City Council — Recreation Zone Planning Scheme Review

ROSS Planning was commissioned by Council to provide input into the development of a new Planning Scheme, with a focus on making land use zoning recommendations, drafting recreation zone codes and developing the extrinsic data to support the parks infrastructure network of the Priority Infrastructure Plan. These elements were developed in accordance with the Sustainable Planning Act 2009 and associated policies and guidelines, namely the Queensland Planning Provisions, Statutory Guideline 09/01—Priority Infrastructure Plans and Practice Notes (PIPRICS) and the statutory North West Regional Plan.

“overall the strength of this project reflected a high level of innovation and tenacity in achieving the open space provision.”

Colin Wise
former-President Parks
and Leisure Australia
(Queensland division)



Open space and land use planning

Open space and land use planning project list

- ACT Government -
 - Urban Open Space and Public Access to Sportsgrounds in the Gungahlin Region (sub-consultant)
- Alice Springs Town Council - Open Space Network Master Plan
- Beaudesert Shire Council -
 - Benchmarking Desired Standards of Service
 - Tamborine Mountain: Sports Opportunities Options Study
- Brisbane City Council - twenty-three Land Management Plans, including:
 - Davies Park, West End
 - Dowse Lagoon, Sandgate
 - Eleanora Park, Wynnum North
 - Faulkner Park, Graceville
 - Oxenham Park, Nundah
 - Peace Park and Third Lagoon Reserve, Sandgate
 - Victoria Park, Herston
 - Yeronga Park, Yeronga
- Brisbane City Council -
 - Berrinba—Browns Plains Open Space Analysis
 - Wynnum Community Facilities Strategy
 - Rocks Riverside Park Plan of Management (sub-consultant)
 - GIS Training for Parks Planners
 - Long Term Community Facility Trends and Needs for Sporting, Recreational and Cultural Infrastructure
- Broken Hill City Council -
 - Plan of Management for Open Spaces
 - Primitive Camping Feasibility Study
 - Walk and Cycle Strategy
- Bundaberg Regional Council - Parks, Open Space, Biodiversity and Landscape Character/Scenic Amenity Planning Study
- Byron Shire Council - Open Space and Recreation Needs Assessment
- Caloundra City Council - Open Space Setting Assessment
- Central Highlands Regional Council - Open Space and Recreation Plan
- Cessnock City Council - Cycleway Strategy
- Dubbo City Council - Dubbo City Park and Open Space Plan
- Eurobodalla Shire Council - Recreation and Open Space Strategy
- Expert witness -
 - Ken Laffey v Brisbane City Council
 - McConaghy Properties v Parkside Development and Townsville City Council
- Fraser Coast Regional Council -
 - Open Space Strategy
- Gold Coast City Council -
 - Recreation, Sport and Open Space Study
 - Northern Growth Corridor Open Space Strategy
 - Gold Coast Hinterland Tourism Audit and Mapping Project
 - Open Space Desired Standards of Service Study
- Gosford City Council - Open Space and Leisure Services Strategic Plan
- Gunnedah Shire Council -
 - Open Space Strategy
 - Plan of Management - Crown & Community Land
- Gympie Regional Council - Open Space and Recreation Plan
- Hervey Bay City Council -
 - Discussion Paper: Plan for Trunk Infrastructure For Parks and Open Space
 - Toogoom- Burrum Heads Sport and Open Space Strategy
- Inverell Shire Council - Open Space and Recreation Strategy
- Ipswich City Council -
 - Open Space and Recreation Strategy
 - Queens Park Land Management Plan
 - Limestone Park Land Management Plan
 - Tivoli Waste Water Centre Land Management Plan
 - Wellington Rise Willowbank Land Management Plan
- Investa - Palmview Open Space and Community Facilities Review
- Kingaroy Shire Council - Walk and Cycle Plan
- Kyogle Council -
 - ten Parks Plans of Management
 - Open Space Design Guide
- Lithgow City Council - Open Space and Recreational Needs Study
- Lockyer Valley Regional Council - Public Parks Strategy
- Logan City Council -
 - Community Facilities Strategy
 - Logan Metro Grant Application Support Material
- City of Melton - Open Space Plan
- Moreton Bay Regional Council -
 - Management and Land Tenure Comparative Research Project
 - three Land Management Plans
- Mount Isa City Council -
 - Open Space and Recreation Zone Planning Scheme Review
 - Cycling Plan
- Moynes Shire Council - Open Space Strategy
- Narrabri Shire Council -
 - Open Space Plan
 - Plan of Management - Crown & Community Land
- Noosa Council - Open Space Strategy (sub-consultant)
- Parramatta City Council - Plan of Management - Crown & Community Land
- Pine Rivers Shire Council - Land Management Plans for eight parks
- Queensland Government, Department of Infrastructure, Local Government and Planning -
 - Multiple Use Public Open Space (sub-consultant)
- Queensland Government, Department of National Parks, Recreation, Sport and Racing -
 - Feasibility Study for a Regional Off-Road Motorcycling Facility
 - Land for Public Parks Evidence-based Research Project
- Redland Shire Council -
 - Social Infrastructure Plan Audit
 - Coochiemudlo Land Management Plan (sub-consultant)
 - Land Management Plan (Commercial Use of Open Space)
- Retire Australia - Open Space Land Assessment and Feasibility
- Rockhampton Regional Council - Open Space, Sport and Recreation Plan
- Scenic Rim Regional Council -
 - Camping Facilities Strategy
 - Community Facilities Strategy
- Singleton Council -
 - Open Space and Recreation Needs Study
 - Buffer Land Management Plans
- Sunnybank Community Sports Club - Lease Renewal documentation
- Sunshine Coast Regional Council -
 - Open Space Strategy Peer Review
- Surf Coast Shire Council -
 - Open Space Strategy
 - Spring Creek PSP Open Space Analysis
 - Anglesea Riverbank Land Management Assessment
- Tamworth City Council -
 - Recreation and Open Space Plan
 - CBD Parks Issues and Options Paper
- Toowoomba Regional Council -
 - Open Space Network Strategy
 - Land Management Plan for Queens Park
 - Water Sensitive Cities Project
- Townsville City Council - Open Space and Recreation Study

